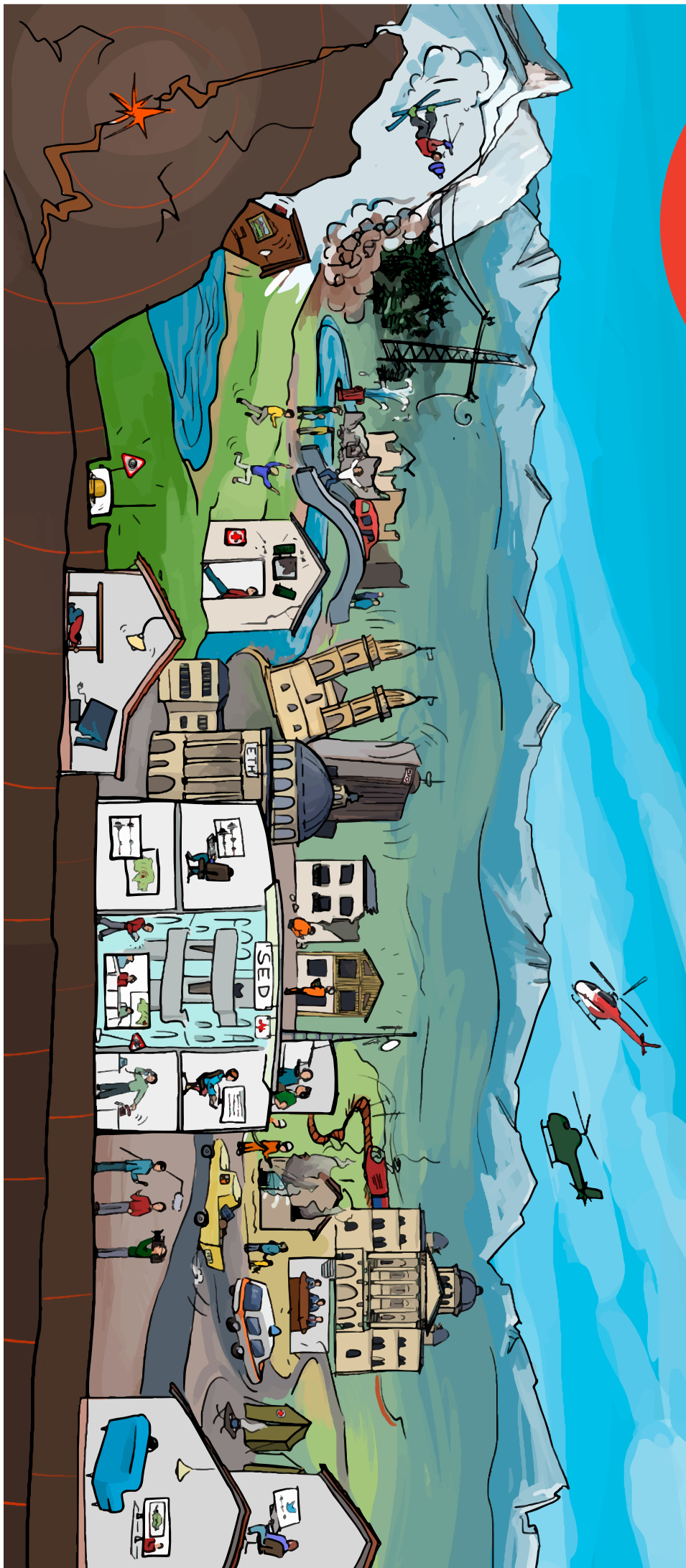


Open House
at the Swiss
Seismological Service

Sunday
September 21, 2014
10 a.m. to 4 p.m.



Are You Ready for an Earthshaking Experience?

The Swiss Seismological Service (SED) at ETH Zurich invites you to a day of open house on the occasion of its 100th anniversary.

Come and visit our institute to discover more about the natural hazard with the highest damage potential in Switzerland and gain insight into the multifaceted work at the official federal agency for earthquake monitoring.

ETH Zürich, Building NO, Sonneggstrasse 5



The Swiss Seismological Service publishes dates, details, and much more about its jubilee year on its website: www.seismo.ethz.ch/sed/100

- 1 unforeSeeable – Earthquakes in Switzerland**
 At the present time, earthquakes cannot be predicted. Nevertheless, a lot is known about where, why, and how often they occur. To make these aspects visible, the Swiss Seismological Service will present an extensive exhibition.

September 6 to November 30, 2014

focusTerra museum, ETH Zürich, Sonneggstrasse 5

- 2 Experiments**
 Trigger an earthquake yourself in one of our experiments and watch its effects

- 3 Earthquake Workshop**
 Attend the earthquake workshop to find out what it takes to measure earthquakes as precisely as possible and where these measuring stations are located throughout Switzerland.

- 4 Operations Center**
 Take a look at the Operations Center of the Swiss Seismological Service and find out what tasks are performed there when a large earthquake shakes Switzerland.

- 5 Earthquake Simulator**
 In our earthquake simulator, you can experience how smaller and larger earthquakes “feel” in different places without putting yourself at risk.

- 6 Lectures and Guided Tour (Approximately 30 Minutes Each)**

<p>11 a.m. and 2 p.m. : Lecture: “Switzerland – an Earthquake Country”</p> <p>Join Stefan Wiemer, Director of the Swiss Seismological Service and Professor of Seismology at ETH Zurich, on an expedition through the earthquake country of Switzerland in his lecture.</p>	<p>3 p.m. : Guided tour: “The Binningen Seismograph”</p> <p>Learn all the important facts about the ultra-heavy, time-honored Binningen seismograph during this guided tour.</p>
--	---

- 7 And There’s More**
 Supervised kids’ corner, where the little ones can color, play, and read.

Students will take care of hungry and thirsty guests with sweet and savory delights.

Location and How to Get There

Swiss Seismological Service
 ETH Zürich, Gebäude NO
 Sonneggstrasse 5
 8006 Zürich

Please use public transport to visit us. There are no parking spaces available.

Tram No. 6, 9, or 10 to “Zürich, ETH / Universitätsspital”. The Polybahn does not operate on Sundays.

The signage inside the building will guide you to the individual highlights.

